

AVAILABLE FOR LEASE

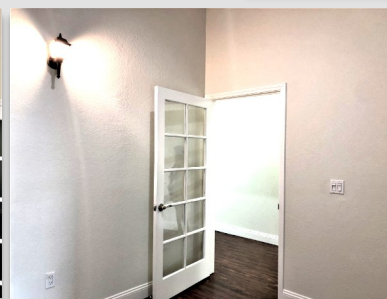
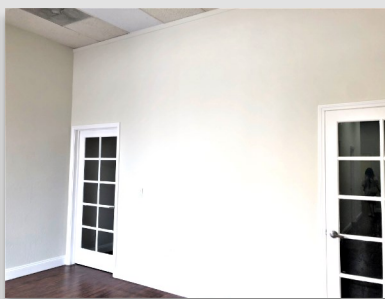
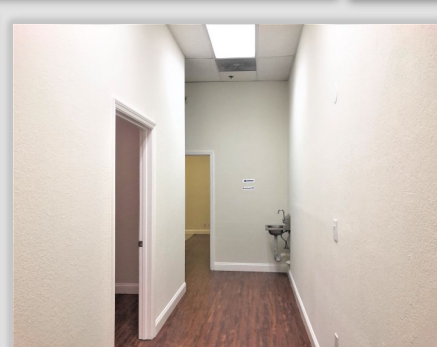
Retail/Office Space

1692 Tully Rd., Unit 16

San Jose, CA 95122

RETAIL/OFFICE SPACE LOCATED IN A HIGH TRAFFIC COMMERCIAL AREA AT THE CORNER OF TULLY RD. AND KING RD. AVAILABLE FOR LEASE.

ATTRACTIVE LEASE TERMS! CALL FOR DETAILS! 408-829-2315



High density and high commercial traffic area anchored by Lion Supermarket, Carl's Jr., Coffee Lovers, Jack In The Box, stores and other offices. Easy access to Hwy 101, 280, 680.

- ◆ Gross leasable area of 952 SF
- ◆ Newly renovated! Fresh paint! New floors!
- ◆ Remodeled bathroom, reception area, 3 office rooms plus utility/service room
- ◆ Attractive lease terms with option for qualified tenants

Maggy Slavova

Broker / Owner
Cal BRE # 01387995

408-829-2315

Email: maggy@goldentrustrealty.com
Web Site: www.goldentrustrealty.com

